

# Komatsu PC210 15m Long Reach Excavator



## ENGINE

<b>Model</b>	Komatsu SAA6D102E-2		
<b>Type</b>	Direct injection, water-cooled, emissionised, turbocharged, after-cooled diesel		
<b>Rated capacity</b>	107 kW/143 HP (ISO 9249 Net)		
<b>Engine speed</b>	1.950 rpm		
<b>No. of cylinders</b>	6	<b>Displacement</b>	5,88 ltr
<b>Bore/stroke</b>	102/120 mm	<b>Battery</b>	2 × 12 V/95 Ah
<b>Alternator</b>	24 V/60 A	<b>Starter motor</b>	24 V/5,5 kW
<b>Air filter type</b>	Double element type with monitor panel dust indicator and auto dust evacuator		
<b>Cooling</b>	Suction type cooling fan with radiator fly screen		

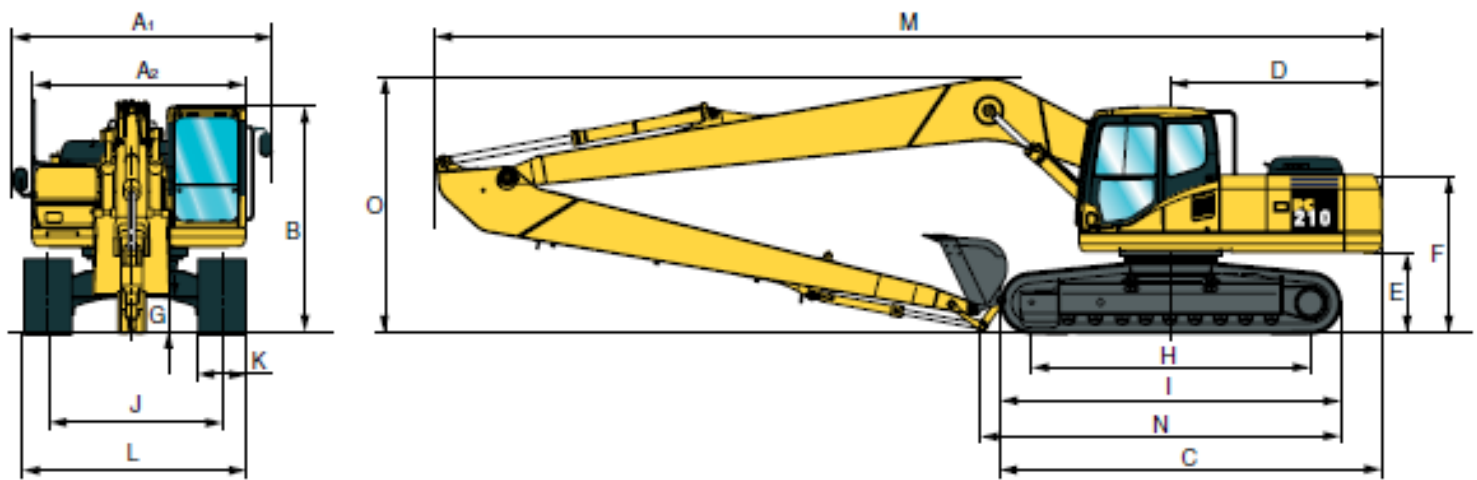
## HYDRAULIC SYSTEM

<b>Type</b>	HydraMind. Closed-centre system with load sensing and pressure compensation valves		
<b>Additional circuits</b>	1 additional circuit can be installed		
<b>Main pump</b>	2 variable displacement piston pumps supplying boom, arm, bucket, swing and travel circuits		
<b>Maximum pump flow</b>	2 × 214 ltr/min		
<b>Relief valve settings</b>			
<b>Implement</b>	380 kg/cm <sup>2</sup>	<b>Swing</b>	295 kg/cm <sup>2</sup>
<b>Travel</b>	380 kg/cm <sup>2</sup>	<b>Pilot circuit</b>	33 kg/cm <sup>2</sup>
<b>Attachment (where fitted)</b>	up to 190 kg/cm <sup>2</sup>		

Call 01304 840845

**OVENDEN**

DIG IT > LOAD IT > CLEAR IT > MOVE IT



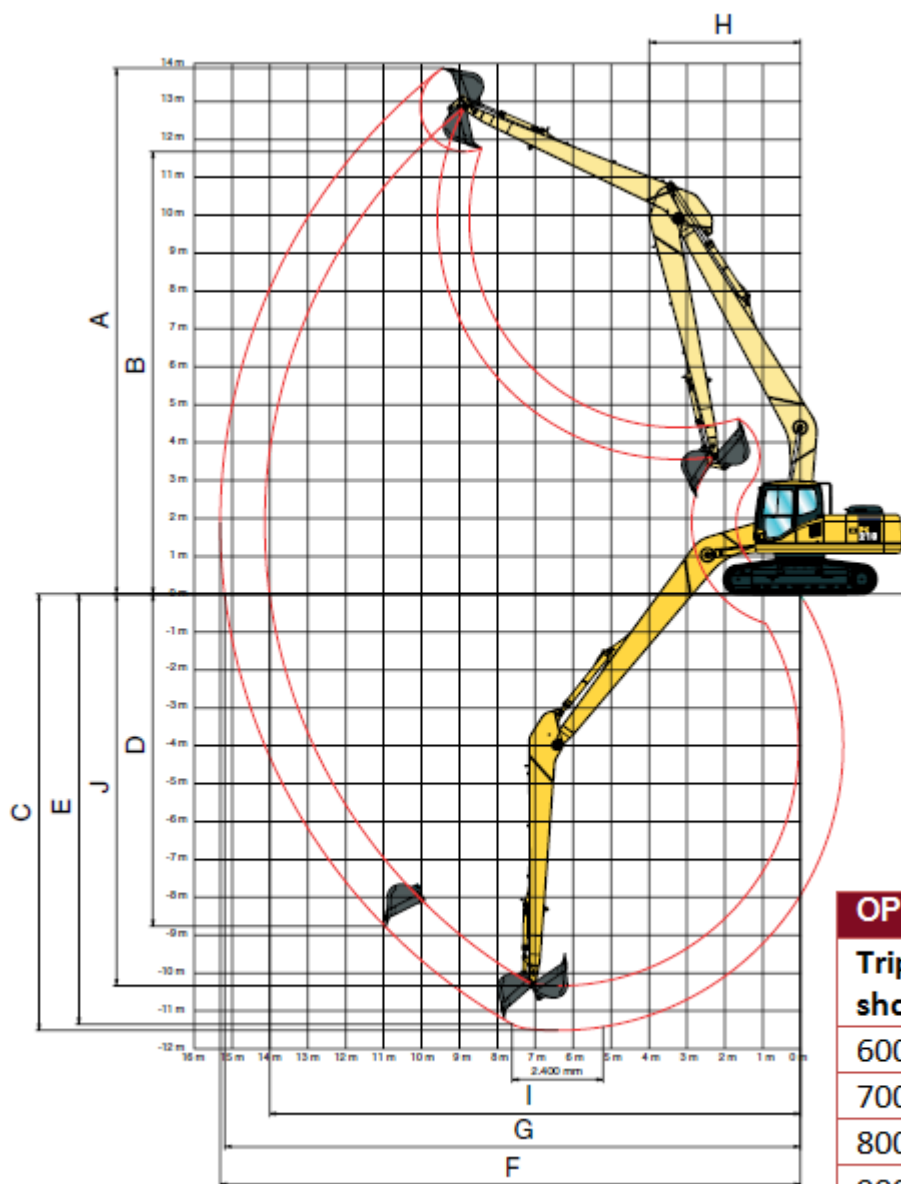
## DIMENSIONS

<b>A1</b>	Overall width of upper structure	2,835 mm
<b>A2</b>	Overall width of machine body	2,515 mm
<b>B</b>	Overall height of cab	3,015 mm
<b>C</b>	Overall length of basic machine	4,995 mm
<b>D</b>	Tail length	2,770 mm
	Tail swing radius	2,800 mm
<b>E</b>	Clearance under counterweight (not machines for powered attachments)	1,100 mm
<b>F</b>	Machine tail height	2,110 mm
<b>G</b>	Ground clearance	440 mm
<b>H</b>	Track length on ground	3,640 mm
<b>I</b>	Track length	4,450 mm
<b>J</b>	Track gauge	2,380 mm
<b>K</b>	Track shoe width	600, 700, 800, 900 mm
	Overall track width with 600 mm shoe	2,980 mm
	Overall track width with 700 mm shoe	3,080 mm
	Overall track width with 800 mm shoe	3,180 mm
	Overall track width with 900 mm shoe	3,280 mm
<b>M</b>	Transport length	12,435 mm
<b>N</b>	Length on ground (transport)	4,725 mm
<b>O</b>	Overall height (to top of boom)	3,390 mm

Call 01304 840845

**OVENDEN**

DIG IT > LOAD IT > CLEAR IT > MOVE IT



#### OPERATING WEIGHT

Triple grouser shoes	Operating weight	Ground pressure
600 mm	23.485 kg	0,50 kg/cm <sup>2</sup>
700 mm	23.845 kg	0,43 kg/cm <sup>2</sup>
800 mm	24.205 kg	0,38 kg/cm <sup>2</sup>
900 mm	24.565 kg	0,35 kg/cm <sup>2</sup>

#### DIMENSIONS

<b>A</b>	Max. digging height	13.880 mm
<b>B</b>	Max. dumping height	11.680 mm
<b>C</b>	Max. digging depth	11.510 mm
<b>D</b>	Max. vertical wall digging depth	8.770 mm
<b>E</b>	Max. digging depth of cut for 2,44 m level	11.345 mm
<b>F</b>	Max. digging reach	15.250 mm
<b>G</b>	Max. digging reach at ground level	15.190 mm
<b>H</b>	Min. swing radius	3.990 mm
<b>I</b>	Max. pin reach at ground level	14.005 mm
<b>J</b>	Max. pin depth	10.335 mm

Call 01304 840845

**OVENDEN**

DIG IT > LOAD IT > CLEAR IT > MOVE IT