

Komatsu PC340 22m Long Reach Excavator



ENGINE

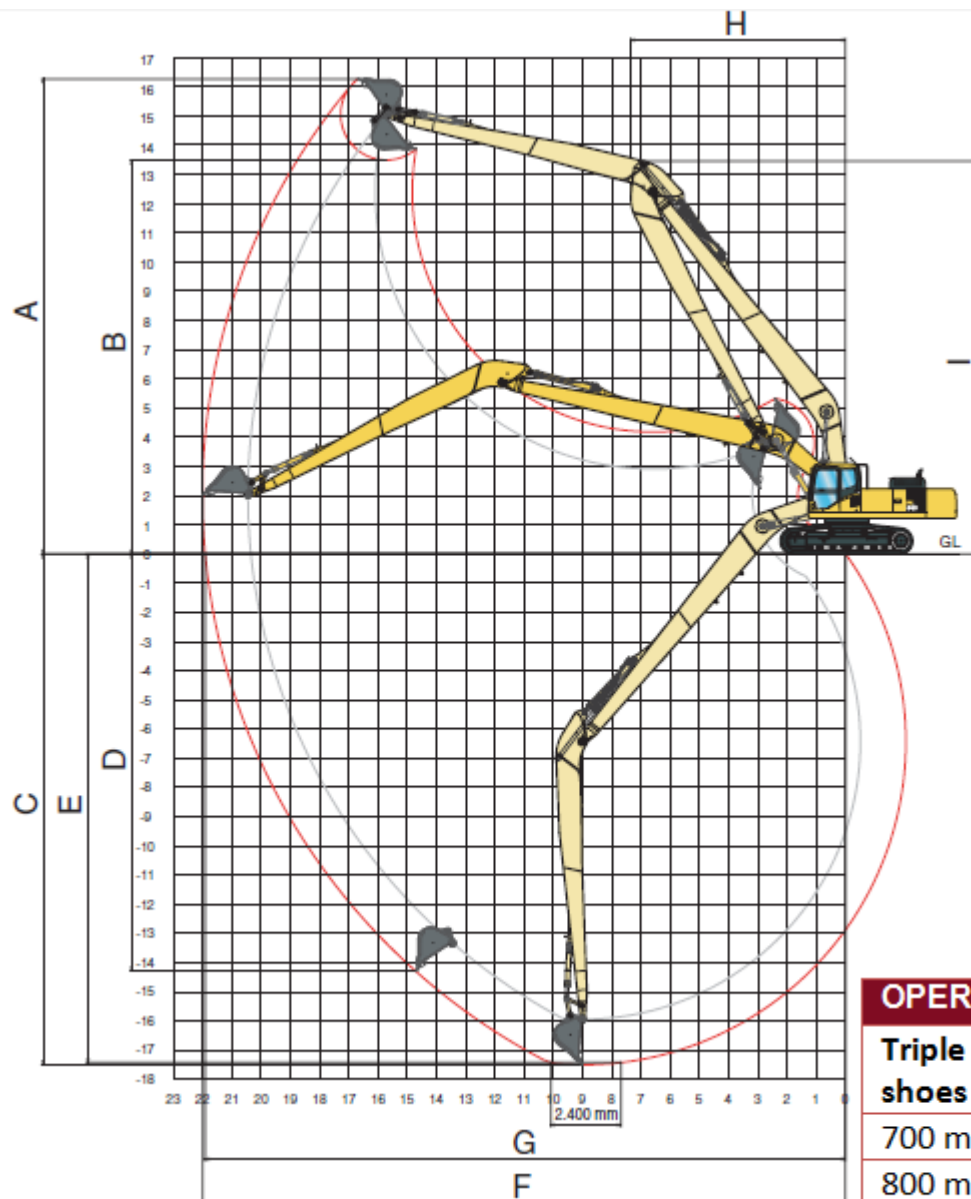
| | | | |
|------------------------|---------------------------------------------------------------------------------|-------------------------|-----------------|
| Model | Komatsu SAA6D114E-2 | | |
| Type | Direct injection, water-cooled, emissionised, turbocharged, after-cooled diesel | | |
| Rated capacity | 180 kW/242 HP (ISO 9249 Net) | | |
| Engine speed | 1,900 rpm | No. of cylinders | 6 |
| Bore x stroke | 114 x 135 mm | Battery | 2 x 12 V/140 Ah |
| Alternator | 24 V/60 A | Starter motor | 24 V/11 kW |
| Air filter type | Double element type with monitor panel dust indicator and auto dust evacuator | | |
| Cooling | Suction type cooling fan with radiator fly screen | | |

HYDRAULIC SYSTEM

| | | | |
|------------------------------|---------------------------------------------------------------------------------------------|----------------------|------------------------|
| Type | HydrauMind. Closed-centre system with load sensing and pressure compensation valves | | |
| Additional circuits | 1 additional circuit can be installed | | |
| Main pump | 2 variable displacement piston pumps supplying boom, arm, bucket, swing and travel circuits | | |
| Maximum pump flow | 2 x 268ltr/min | | |
| Relief valve settings | | | |
| Implement | 380 kg/cm ² | Swing | 285 kg/cm ² |
| Travel | 380 kg/cm ² | Pilot circuit | 33 kg/cm ² |

Call 01304 840845

OVENDEN
DIG IT > LOAD IT > CLEAR IT > MOVE IT



OPERATING WEIGHT

| Triple grouser shoes | Operating weight | Ground pressure |
|----------------------|------------------|-------------------------|
| 700 mm | 41,100 kg | 0,67 kg/cm ² |
| 800 mm | 41,480 kg | 0,59 kg/cm ² |
| 850 mm | 41,670 kg | 0,59 kg/cm ² |

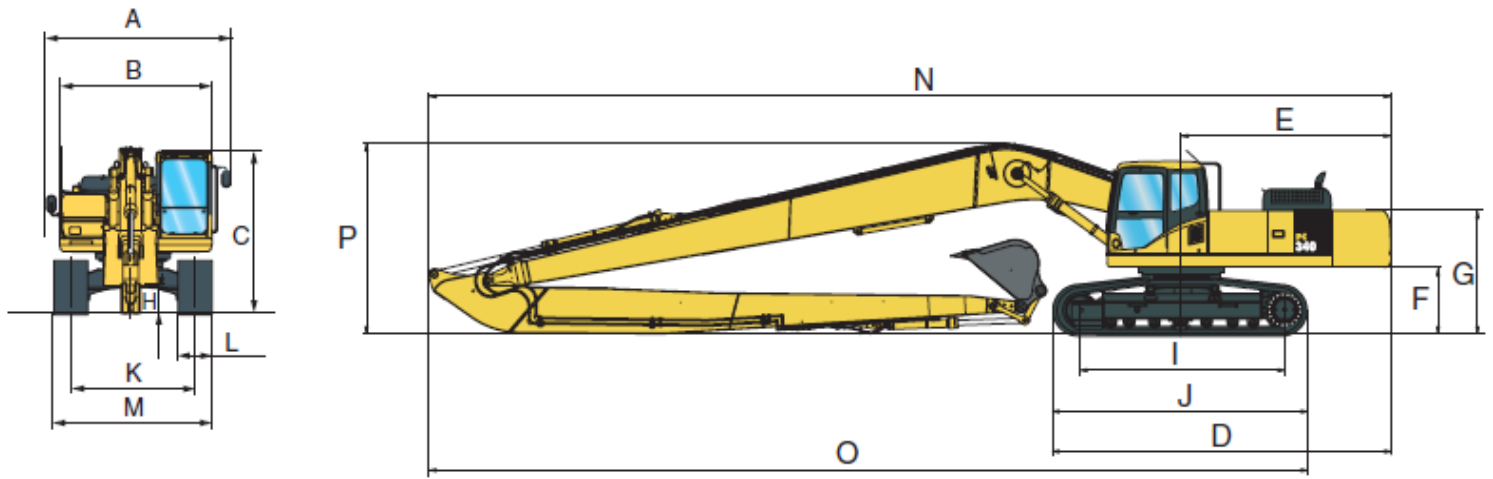
DIMENSIONS

| | | |
|----------|--------------------------------------------|-----------|
| A | Max. digging height | 16,260 mm |
| B | Max. dumping height | 13,480 mm |
| C | Max. digging depth | 17,485 mm |
| D | Max. vertical wall digging depth | 14,275 mm |
| E | Max. digging depth of cut for 2,44 m level | 17,410 mm |
| F | Max. digging reach | 22,010 mm |
| G | Max. digging reach at ground level | 21,915 mm |
| H | Min. swing radius | 7,350 mm |
| I | Max. height at min. swing radius | 13,445 mm |

Call 01304 840845

OVENDEN

DIG IT > LOAD IT > CLEAR IT > MOVE IT



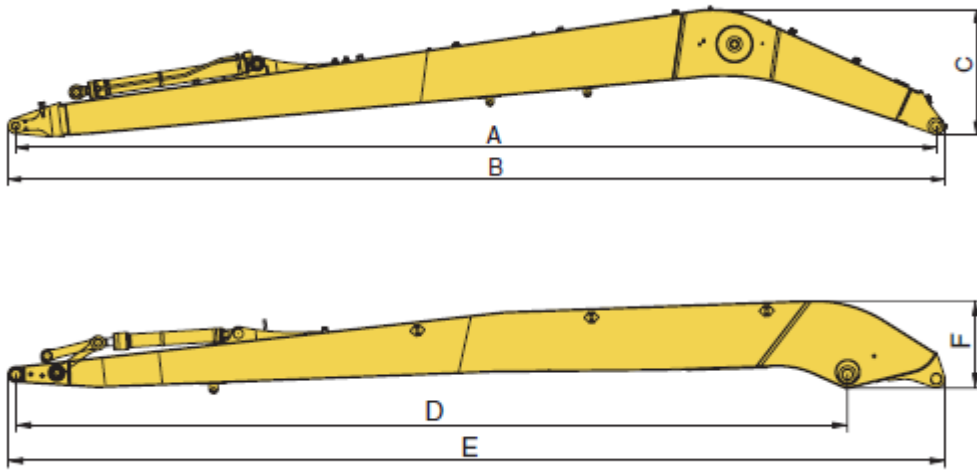
DIMENSIONS

| | | |
|----------|----------------------------------------------------------|----------------|
| A | Overall width of upper structure with mirrors & handrail | 3,397 mm |
| B | Overall width of upper structure | 2,955 mm |
| C | Overall height of cab | 3,130 mm |
| D | Overall length of basic machine | 6,060 mm |
| E | Tail length | 3,775 mm |
| | Tail swing radius | 3,825 mm |
| F | Clearance under counterweight | 1,180 mm |
| G | Machine tail height | 2,580 mm |
| H | Ground clearance | 498 mm |
| I | Track length on ground | 3,700 mm |
| J | Track length | 4,630 mm |
| K | Track gauge | 2,590 mm |
| L | Track shoe width | 700,800,850 mm |
| M | Overall track width with 700 mm shoe | 3,290 mm |
| | Overall track width with 800 mm shoe | 3,390 mm |
| | Overall track width with 850 mm shoe | 3,440 mm |
| N | Transport length | 17,220 mm |
| O | Length on ground (transport) | 14,475 mm |
| P | Overall height (to top of boom) | 3,405 mm |

Call 01304 840845

OVENDEN

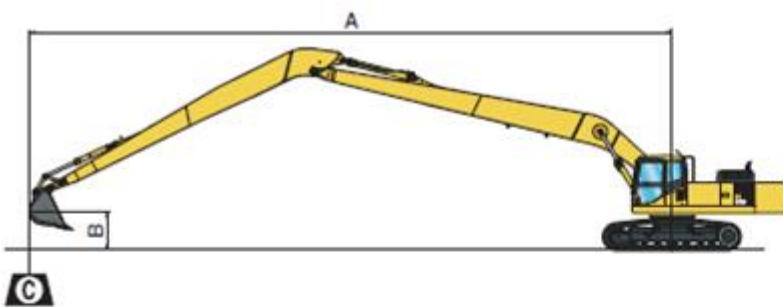
DIG IT > LOAD IT > CLEAR IT > MOVE IT



BOOM & ARM DIMENSIONS

| | |
|----------|-----------|
| A | 12,220 mm |
| B | 12,430 mm |
| C | 1,550 mm |
| D | 9,500 mm |
| E | 10,640 mm |
| F | 1,095 mm |

LIFTING CAPACITY



- A** – Reach from swing center
- B** – Bucket hook height
- Rating over front
- Rating over side
- Rating at maximum reach

When removing bucket, linkage or cylinder, lifting capacities can be increased by their respective weights
With 800 mm shoe

| A \ B | | | 20 m | | 18 m | | 16 m | | 14 m | | 12 m | |
|-------|--|--|------|--|------|--|------|--|------|--|------|--|
| | | | | | | | | | | | | |

| With 800 mm shoe | | 14 m | 12 m | 10 m | 8 m | 6 m | 4 m | 2 m | 0 m | -2 m | -4 m | -6 m | -8 m | -10 m | -12 m | -14 m | -16 m |
|------------------|-------|-------|---------|---------|---------|---------|---------|---------|---------|---------|---------|-------|------|-------|-------|---------|---------|
| kg | * 850 | * 850 | | | | | | | | | | | | | | | |
| | | | * 1.050 | * 1.050 | | | | | | | | | | | | | |
| | | | * 1.600 | * 1.600 | | | | | | | | | | | | | |
| | | | * 1.650 | * 1.650 | * 1.750 | * 1.750 | | | | | | | | | | | |
| | | | * 1.700 | * 1.700 | * 1.900 | * 1.900 | | | | | | | | | | | |
| | | | * 1.800 | * 1.800 | * 2.050 | * 2.050 | * 2.300 | * 2.300 | * 2.700 | * 2.700 | | | | | | | |
| | | | * 1.900 | 1.700 | * 2.200 | * 2.200 | * 2.550 | * 2.550 | * 3.050 | * 3.050 | | | | | | | |
| | | | * 2.000 | 1.600 | * 2.300 | 2.050 | * 2.750 | 2.650 | * 3.350 | * 3.350 | | | | | | | |
| | | | * 2.050 | 1.450 | * 2.450 | 1.900 | * 2.900 | 2.450 | * 3.550 | 3.150 | | | | | | | |
| | | | * 2.100 | 1.400 | * 2.500 | 1.750 | * 3.050 | 2.250 | * 3.750 | 2.900 | | | | | | | |
| | | | * 2.100 | 1.350 | * 2.500 | 1.700 | * 3.050 | 2.150 | * 3.800 | 2.750 | | | | | | | |
| | | | * 1.950 | 1.350 | * 2.450 | 1.650 | * 3.000 | 2.100 | * 3.750 | 2.700 | | | | | | | |
| | | | | | * 2.200 | 1.700 | * 2.800 | 2.100 | * 3.550 | 2.700 | | | | | | | |
| | | | | | | | | | * 2.400 | 2.200 | * 3.100 | 2.800 | | | | | |
| | | | | | | | | | | | | | | | | * 2.350 | * 2.350 |
| | | | | | | | | | | | | | | | | | |

Call 01304 840845

OVENDEN

DIG IT > LOAD IT > CLEAR IT > MOVE IT