

Tyler Court Steps

Kent University

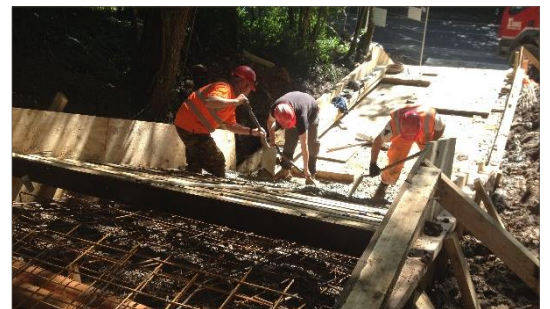


Ovenden Allworks were awarded the contract to remove the old set of steps connecting the Kent University Campus with the Tyler Hill in Canterbury and construct a new set.

After overcoming the difficult access and ensuring the site was secure, the sub base was constructed with granular Type 1 material after the ground had been cut to the correct levels. The steel reinforced concrete was laid in stages up the bank. The walkway has accompanying up stands and down stands for structural integrity and to support the hand rails.

The walkway was finished with a non-slip Dura Walk two coat system and fitted with a corduroy hazard warning strips at the tops and bottoms of each set of steps for the visually impaired.

The works were carried out to a very tight programme, but all parties worked together closely to ensure that the works were completed by the deadline of the university reopening for the Autumn Term.



OVENDEN
DIG IT > LOAD IT > CLEAR IT > MOVE IT

Call 01304 849238 | www.ovendens.com